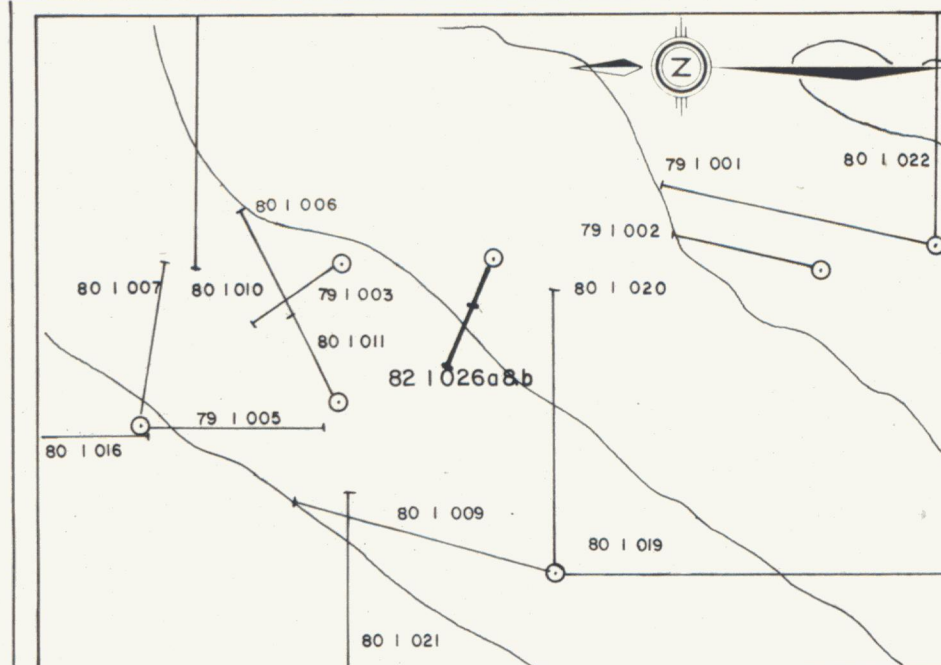
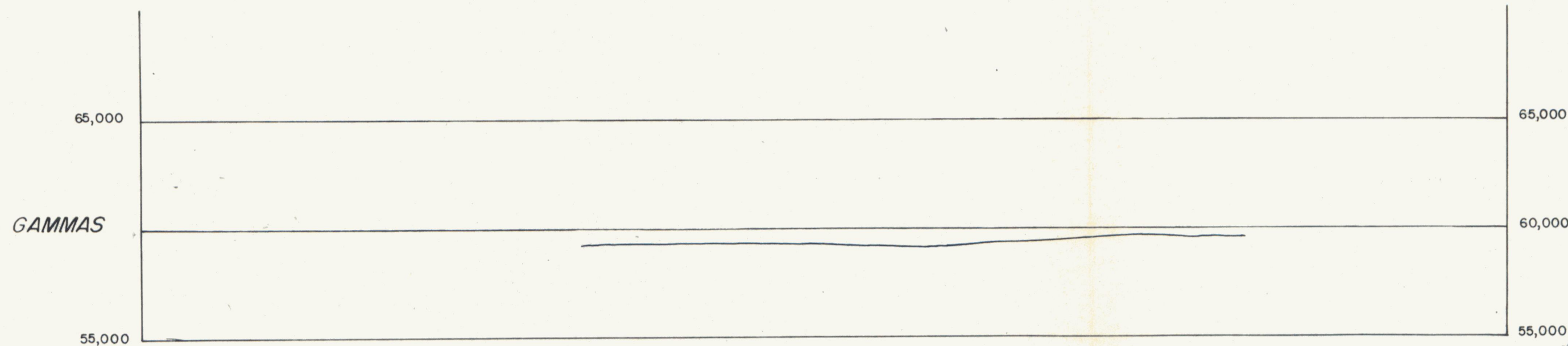


MAGNETIC PROFILE



LOCATION MAP SCALE 1:2500
50 25 0 50 100
METRES

LEGEND

- Chloritic breccia (Hb4) - dark green chloritic matrix & fragments, often hematitic, associated with Hb3 fault zones.
- Clast deficient breccia (Hb3) - euhedral to massive magnetite, often hematized, associated with pyrite, chalcocopyrite, barite and carbonate.
- Heteroclast breccia (Hb2) - with chlorite, albite, hematite, carbonate alteration of rock fragments and matrix.
- Homoclast breccia (Hb1) - strongly foliated and bleached fragments of Q2a in a carbonate matrix.
- Quartzite Group (Q2) - siltstones and phyllites.
- Fault.
- Gossan.
- Mineral occurrence.
- Single rock location with % of various minerals
- Trace
- Chalcocopyrite
- Pyrite
- Magnetite
- Hematite
- Malachite
- Azurite
- Barite
- Siderite

INTERVAL (m)	FROM	TO	SAMPLE #	RESULTS					
				% Cu	ppm Co	ppm U	ppm Ag	ppb Au	
28.0	28.7		M01398	0.90	108	1.6	0.1	99	
28.7	30.2		M01399	0.58	109	1.0	0.1	137	
35.7	36.3		M02001	0.03	113	1.2	0.1	10	
52.4	53.9		M02002	0.01	145	2.8	0.1	5	
53.9	55.0		M02003	0.04	315	8.5	0.7	36	
55.0	57.0		M01508	0.02	111	62.0	0.3	13	
57.0	57.6		M02004	0.07	80	1.8	0.1	10	
57.6	58.8		M02005	0.05	350	37.0	2.2	36	
58.8	59.4		M02006	0.01	43	1.8	0.1	3	
59.4	61.0		M02007	<0.01	41	1.7	0.1	1	
73.8	75.3		M02008	0.01	270	24.0	0.1	16	
75.3	76.5		M02009	<0.01	235	8.9	0.1	8	
93.0	93.6		M02010	0.01	43	9.0	0.1	1	
93.6	95.0		M02011	<0.01	71	0.3	0.1	1	
95.0	95.4		M02012	<0.01	110	0.6	0.1	2	
95.4	96.9		M02013	0.03	275	0.3	0.1	15	
96.9	97.8		M02014	<0.01	240	4.0	0.6	30	
97.8	98.7		M01509	<0.01	220	5.4	0.4	14	
98.7	99.4		M02015	<0.01	83	0.3	0.1	6	
102.1	102.7		M02016	<0.01	18	1.2	0.1	10	
103.9	105.4		M02017	0.01	280	1.1	0.1	13	
105.4	106.7		M02018	<0.01	375	0.8	0.1	10	
106.7	108.2		M02019	<0.01	350	0.8	0.1	8	
108.2	109.4		M02020	<0.01	220	0.9	0.1	12	
109.4	110.6		M02021	<0.01	93	0.7	0.1	3	
110.6	111.7		M02022	<0.01	280	0.8	0.1	4	
112.8	113.7		M02023	<0.01	32	1.4	0.1	9	

HOLES 821026 a&b

COORDINATES 35+50N, 0+13E

COLLAR ELEVATION 1214m

AZIMUTH 292°DIP -60°-70°

DEPTH 35.1m (115'), 114.6m (376')

SECTION FACING NORTH

Figure WJV82 - I5

ARCHER, CATHRO & ASSOCIATES (1981) LIMITED

SECTION HOLE 821026

IGOR PROPERTY

WERNECKE JOINT VENTURE

W. J. Cathro
12/1/83

SCALE 1:400
10 8 6 4 2 0 4 8 12 16 20
metres.

To accompany report dated December, 1982.

091445